

(CRANIUM) SGLINEN COLLECTION

COTTON JACQUARDS

ARAGON

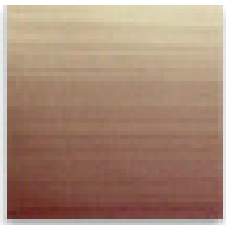
360TC | 100% Giza Egyptian Cotton



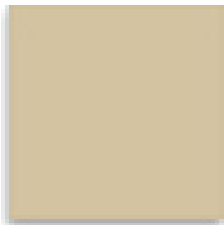
The Aragon collection consists of an elegant floral reversible design in Water: Ice Blue with Espresso Brown, or Fire: Fire Red with Suede. This fabric is made in Italy, at a mill that has passed down through several generations. There is a substantial difference in the quality of Italian spinning, weaving, and finishing compared to Asian and Indian fabrics. Our Italian fabrics will remain colorfast, beautiful, and sensuous to the touch far longer than others. The threads in these fabrics have been spun entirely from pure 100% Giza Egyptian Cotton. No other cotton types have been spun into these wonderful fabrics. (Please note that some “Egyptian Cottons” have only a small percentage of Egyptian cotton content). Giza is the finest of all the different types of Egyptian Cottons.



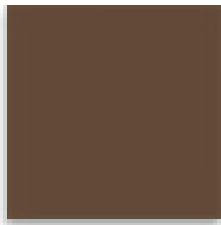
AVAILABLE COLORS:



Fire Stripe



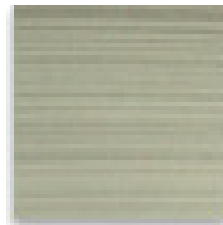
Fire Suede



Water Espresso



Water Pattern



Water Stripe



Fire Pattern

(CRANIUM) SGLINEN COLLECTION

COTTON JACQUARDS

ASCOT

300TC | 100% Giza Egyptian Cotton



The Ascot collection consists of an overall paisley in silver - gray with gray satin stitching and gray solid.

This fabric is made in Italy, at a mill that has passed down through several generations. There is a substantial difference in the quality of Italian spinning, weaving, and finishing compared to Asian and Indian fabrics. Our Italian fabrics will remain colorfast, beautiful, and sensuous to the touch far longer than others. The threads in these fabrics have been spun entirely from pure 100% Giza Egyptian Cotton.

No other cotton types have been spun into these wonderful fabrics. (Please note that some "Egyptian Cottons" have only a small percentage of Egyptian cotton content). Giza is the finest of all the different types of Egyptian Cottons.



AVAILABLE COLORS:



Greu



Pattern



(CRANIUM) SGLINEN COLLECTION

COTTON JACQUARDS

BELLAGIO SPRING

335TC | 100% Giza Egyptian Cotton

Bellagio Spring is a large fiddlehead inspired jacquard. The colors are flax and rust pattern on a pale blue background. The coordinate solid fabric for sheets and pillowcases is Capri Flax.

This bed linen has been very simply styled to ensure that the full impact of the large fiddlehead pattern can be appreciated. There is a choice of two toss cushions to finish the bed.



(CRANIUM) SGLINEN COLLECTION

COTTON JACQUARDS

BELLAGIO WINTER

335TC | 100% Giza Egyptian Cotton

Bellagio Winter is a large fiddlehead inspired jacquard. The colors are putty and grey pattern on a bark background. The jacquard coordinates with matching bark color solid sateen for the sheets and pillowcases.

This bed linen has been very simply styled to ensure that the full impact of the large fiddlehead pattern can be appreciated. There is a choice of two toss cushions to finish the bed.



(CRANIUM) SGLINEN COLLECTION

COTTON JACQUARDS

BRAVA

300TC | 100% Giza Egyptian Cotton

The Brava collection consists of Blue coordinating with White Linen. Also featuring very Unique square Euro shams and Neck roll, and classic hemstitching on the linen flat sheet. This fabric is made in Italy, at a mill that has passed down through several generations. There is a substantial difference in the quality of Italian spinning, weaving, and finishing compared to Asian and Indian fabrics. Our Italian fabrics will remain colorfast, beautiful, and sensuous to the touch far longer than others.

The threads in these fabrics have been spun entirely from pure 100% Giza Egyptian Cotton. No other cotton types have been spun into these wonderful fabrics. (Please note that some “Egyptian Cottons” have only a small percentage of Egyptian cotton content). Giza is the finest of all the different types of Egyptian Cottons.

AVAILABLE COLORS:

Blue with White Linen



(CRANIUM) SGLINEN COLLECTION

COTTON JACQUARDS

BREGANO DESERT

350 Thread Count / 700 Strand Count (Main)

280 Thread Count / 560 Strand Count (Stripe)

100% Giza Egyptian Cotton



Bregano consists of a large medallion motif. We have paired it with a beautiful harmonizing stripe with a very supple hand. Bregano comes in two color ways: Desert and Seashore. Desert is a delicate combination of Taupe and Bristol on a sable background. The sheets and pillowcases are available in Capri Sable or allover Stripe. This pattern shows very well with Puccini Crystal Mist. Thread count is a minor part of the true value of fabric. Any kind of cotton can be woven to a high count. However, it is the kind of cotton used to make the threads that is the most important factor in every bed linen.

The threads in these fabrics have been spun entirely from pure 100% Giza Egyptian Cotton. No other cotton types have been spun into these wonderful fabrics. (Please note that some “Egyptian Cottons” have only a small percentage of Egyptian cotton content). Giza is the finest of all the different types of Egyptian Cotton.



Pattern



Stripe



(CRANIUM) SGLINEN COLLECTION

COTTON JACQUARDS

BREGANO SEASHORE

350 Thread Count / 700 Strand Count (Main)

280 Thread Count / 560 Strand Count (Stripe)

100% Giza Egyptian Cotton



Bregano consists of a large medallion motif. We have paired it with a beautiful harmonizing stripe with a very supple hand. Bregano comes in two color ways: Desert and Seashore. Seashore is a beautiful combination of blues and greens on a sable background. The sheets and pillowcases are available in Capri Sable or allover Stripe. This pattern shows very well with Puccini Crystal Mist.

Thread count is a minor part of the true value of fabric. Any kind of cotton can be woven to a high count. However, it is the kind of cotton used to make the threads that is the most important factor in every bed linen. The threads in these fabrics have been spun entirely from pure 100% Giza Egyptian Cotton. No other cotton types have been spun into these wonderful fabrics. (Please note that some "Egyptian Cottons" have only a small percentage of Egyptian cotton content). Giza is the finest of all the different types of Egyptian Cotton.



Stripe



Pattern



(CRANIUM) SGLINEN COLLECTION

COTTON JACQUARDS

CORTINA AURA

280 Thread Count / 560 Strand Count | 100% Giza Egyptian Cotton

Cortina Aura is an unusual jacquard fabric that shimmers and changes when seen at different angles. The Cortina consists of three patterns that provide the opportunity to easily mix and match the linen pieces for a custom look.

The duvet cover, pillow shams and two accessory cushions can be made in any of the three fabrics. The coordinate is Capri Honey for the sheets and pillowcases with Aura trim on the cuffs.



(CRANIUM) SGLINEN COLLECTION

COTTON JACQUARDS

CORTINA CICLO

280 Thread Count / 560 Strand Count | 100% Giza Egyptian Cotton

Cortina Ciclo jacquard with honey circles is very minimalist. The Cortina consists of three patterns that provide the opportunity to easily mix and match the linen pieces for a custom look.

The duvet cover, pillow shams and two accessory cushions can be made in any of the three fabrics. The coordinate is Capri Honey for the sheets and pillowcases with Aura trim on the cuffs.



(CRANIUM) SGLINEN COLLECTION

COTTON JACQUARDS

CORTINA PERGOLA

280 Thread Count / 560 Strand Count | 100% Giza Egyptian Cotton



Cortina Pergola is a modern take on a traditional arbor pattern.

The Cortina consists of three patterns that provide the opportunity to easily mix and match the linen pieces for a custom look. The duvet cover, pillow shams and two accessory cushions can be made in any of the three fabrics.

The coordinate is Capri Honey for the sheets and pillowcases with Aura trim on the cuffs.



(CRANIUM) SGLINEN COLLECTION

COTTON JACQUARDS

DOLCE

300TC Pattern / 200TC Solid | 100% Long Staple Cotton



The Dolce collection features an elegant, soft swirl pattern.

Available in:

Jade (soft green pattern on Jade with solid Crème)

Aquamarine (Crème pattern on Blue with solid Crème),

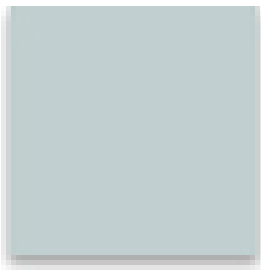
Sapphire (white pattern on Blue with solid white)

Smokey Quartz (Taupe pattern on Quartz with solid white).

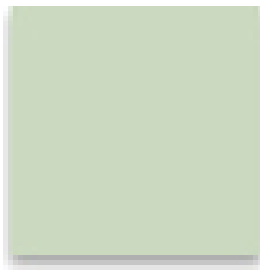


Fabric made in Czech Republic.

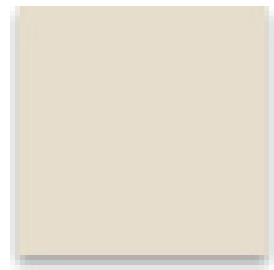
AVAILABLE COLORS:



Aquamarine



Jade



Smokey Quartz

(CRANIUM) SGLINEN COLLECTION

COTTON JACQUARDS

ECHO BROWN

205TC | 100% Giza Egyptian Cotton



The Echo collection consists of a contemporary and modern wide stripe. This fabric is made in Italy, at a mill that has passed down through several generations. There is a substantial difference in the quality of Italian spinning, weaving, and finishing compared to Asian and Indian fabrics.

Our Italian fabrics will remain colorfast, beautiful, and sensuous to the touch far longer than others. The threads in these fabrics have been spun entirely from pure 100% Giza Egyptian Cotton. No other cotton types have been spun into these wonderful fabrics. (Please note that some “Egyptian Cottons” have only a small percentage of Egyptian cotton content). Giza is the finest of all the different types of Egyptian Cottons.

AVAILABLE COLORS:

Brown

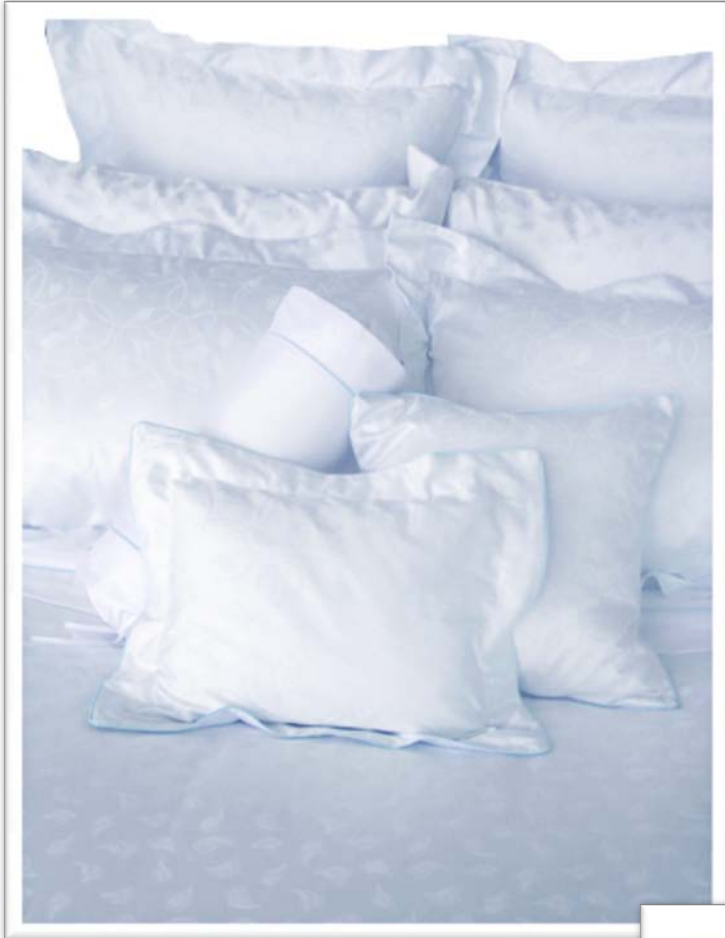


(CRANIUM) SGLINEN COLLECTION

COTTON JACQUARDS

ETUDE

300TC | 100% Long Staple Cotton



The Etude collection consists of a white leaf on a light blue, a white leaf vine on a light blue, with a solid in white.

Fabric made in Czech Republic.

AVAILABLE COLORS:

White leaf pattern on light blue



(CRANIUM) SGLINEN COLLECTION

COTTON JACQUARDS

GISELLE

360 Thread Count / 560 Strand Count (Pattern)

300 Thread Count (Solid)

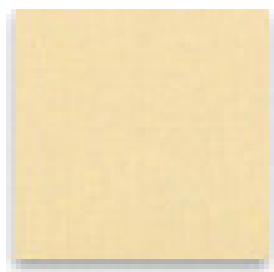
100% Giza Egyptian Cotton



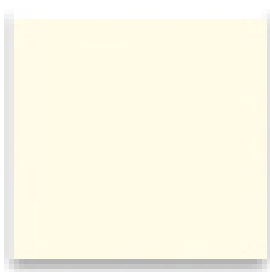
This collection consists of a Pattern, and a Solid. This cotton is completely machine washable and dryable. This is a remarkable fabric made up of two threads, or strands, twisted together to make 2 ply threads of exceptional quality. This special twisted double thread imparts greater strength and longevity to the fabric, while maintaining incredible softness. This fabric is made in Italy, at a mill that has passed down through several generations. There is a substantial difference in the quality of Italian spinning, weaving, and finishing compared to Asian and Indian fabrics. Our Italian fabrics will remain colorfast, beautiful, and sensuous to the touch far longer than others. The thread in these fabrics has been spun entirely from pure 100% Giza Egyptian Cotton. No other cotton types have been spun into these wonderful fabrics. (Please note that some "Egyptian Cottons" have only a small percentage of Egyptian cotton content). Giza is the finest of all the different types of Egyptian Cottons.



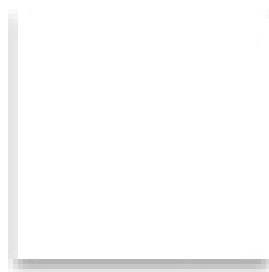
AVAILABLE COLORS:



Honey



Ivory



White

(CRANIUM) SGLINEN COLLECTION

COTTON JACQUARDS

HAMPTON

205TC | 100% Giza Egyptian Cotton



The Hampton collection consists of an overall striped pattern. Available in Floris black: using grey and black tones with coordinating solids in black. This fabric is made in Italy, at a mill that has passed down through several generations. There is a substantial difference in the quality of Italian spinning, weaving, and finishing compared to Asian and Indian fabrics.

Our Italian fabrics will remain colorfast, beautiful, and sensuous to the touch far longer than others. The threads in these fabrics have been spun entirely from pure 100% Giza Egyptian Cotton. No other cotton types have been spun into these wonderful fabrics. (Please note that some “Egyptian Cottons” have only a small percentage of Egyptian cotton content). Giza is the finest of all the different types of Egyptian Cottons.

AVAILABLE COLORS:

Floris Black with Grey



(CRANIUM) SGLINEN COLLECTION

COTTON JACQUARDS

HELIO

400 TC (Pattern) / 300 TC (Solid) | 100% Giza 70 Egyptian Cotton

The Helio collection features a contemporary overall pattern, coordinating with the Oratio collection.

This fabric is made in Italy, at a mill that has passed down through several generations. There is a substantial difference in the quality of Italian spinning, weaving, and finishing compared to Asian and Indian fabrics.

Our Italian fabrics will remain colorfast, beautiful, and sensuous to the touch far longer than others. The threads in these fabrics have been spun entirely from pure 100% Giza Egyptian Cotton. No other cotton types have been spun into these wonderful fabrics. (Please note that some “Egyptian Cottons” have only a small percentage of Egyptian cotton content). Giza is the finest of all the different types of Egyptian Cottons.

AVAILABLE COLORS:

Raffia (Light Taupe with Ivory pattern)



(CRANIUM) SGLINEN COLLECTION

COTTON JACQUARDS

JENEVE

300TC | 100% Combed Cotton



Jeneve features a subtle vine pattern in White or Bone. 300TC; 100% Combed Cotton; Made in Israel.

Thread count is a minor part of the true value of fabric. Any kind of cotton can be woven to a high count. However, it is the kind of cotton used to make the threads that is the most important factor in every bed linen.

AVAILABLE COLORS:

White

Bone



(CRANIUM) SGLINEN COLLECTION

COTTON JACQUARDS

KERRISDALE

352 Thread Count / 1,015 Strand Count | 65% Cotton, 35% Silk



The Kerrisdale collection features an Aubergine cotton solid with an understated yet stunning large floral silk embroidery in Gold. Kerrisdale is coordinated with two Capri solids: Antique Gold and Mauve.

Details: Antique Gold piping on square shams and toss cushion and embroidery in Aubergine on the flat sheet and shams. The decorative cushions include a bolster in the main pattern.

Made in Italy.

AVAILABLE COLORS:

Pattern: Gold & Aubergine

Solid: Mauve & Antique Gold



(CRANIUM) SGLINEN COLLECTION

COTTON JACQUARDS

KOSMA

300TC | 100% Giza 70 Egyptian Cotton



Kosma combines a fresh and delicate butterfly motif with a classic herringbone pattern in Driftwood, White and Fawn. The pattern is paired with a narrow pin stripe fabric and White matelasse and finished with an elegant satin stitch in Suede on the staple pieces. 300TC; 100% Giza 70 Egyptian Cotton; Made Italy.

Details: Narrow triple satin stitch in Suede on the flat sheet and pillowcases. The square shams and the toss cushion are White matelasse. Thread count is a minor part of the true value of fabric. Any kind of cotton can be woven to a high count. However, it is the kind of cotton used to make the threads that is the most important factor in every bed linen.

AVAILABLE COLORS:

Driftwood,
White
Fawn



(CRANIUM) SGLINEN COLLECTION

COTTON JACQUARDS

LINDAU

300TC | 100% Giza Egyptian Cotton



The Lindau collection consists of an overall abstract leaf design.

This fabric is made in Italy, at a mill that has passed down through several generations. There is a substantial difference in the quality of Italian spinning, weaving, and finishing compared to Asian and Indian fabrics. Our Italian fabrics will remain colorfast, beautiful, and sensuous to the touch far longer than others. The thread in these fabrics has been spun entirely from pure 100% Giza Egyptian Cotton. No other cotton types have been spun into these wonderful fabrics. (Please note that some "Egyptian Cottons" have only a small percentage of Egyptian cotton content). Giza is the finest of all the different types of Egyptian Cottons.

AVAILABLE COLORS:

Fawn

Espresso



(CRANIUM) SGLINEN COLLECTION

COTTON JACQUARDS

LINEA

300TC Jacquard | 100% Giza 70 Egyptian Cotton



Linea is an organic cotton jacquard. The pattern features an elegant plaid. The coordinate is a small dot for flat and fitted sheets as well as pillowcases and cushions. The flat sheet and pillowcases are finished with a single row of satin stitch. This bed linen can be mixed with Serata organic to give an individual look to your bed. PPIS is a National Standard for Organically grown plants and their products, instilled and monitored by the Ministry of Agriculture and Rural Development, in the State of Israel.

AVAILABLE COLORS:



Linea



Serata



(CRANIUM) SGLINEN COLLECTION

COTTON JACQUARDS

MARIA

300TC | 100% Giza Egyptian Cotton

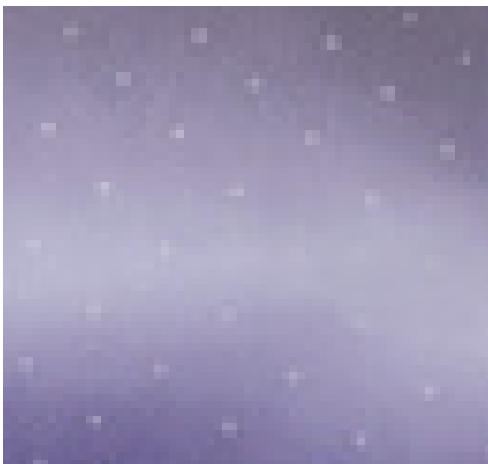


The Maria collection consists of an overall Swiss dot on Lilac background. This fabric is made in Italy, at a mill that has passed down through several generations. There is a substantial difference in the quality of Italian spinning, weaving, and finishing compared to Asian and Indian fabrics. Our Italian fabrics will remain colorfast, beautiful and sensuous to the touch far longer than others.

The thread in these fabrics has been spun entirely from pure 100% Giza Egyptian Cotton. No other cotton types have been spun into these wonderful fabrics. (Please note that some "Egyptian Cottons" have only a small percentage of Egyptian cotton content). Giza is the finest of all different types of Egyptian Cottons.

AVAILABLE COLORS:

Lilac with White Swiss Dot



(CRANIUM) SGLINEN COLLECTION

COTTON JACQUARDS

NAPOLI

200TC | 100% Giza Egyptian Cotton

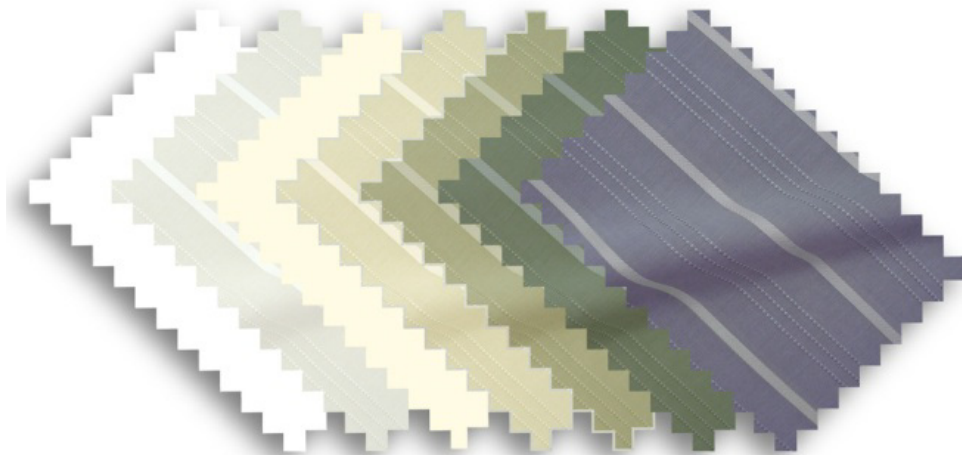


The Napoli collection consists of an Ivory simple stripe on Ivory, Taupe and Moss, and White simple stripe on White. Ivory, Taupe and Moss include a solid Ivory, White includes a solid White. This fabric is made in Italy, at a mill that has passed down through several generations. There is a substantial difference in the quality of Italian spinning, weaving, and finishing compared to Asian and Indian fabrics.

Our Italian fabrics will remain colorfast, beautiful, and sensuous to the touch far longer than others. The thread in these fabrics has been spun entirely from pure 100% Giza Egyptian Cotton. No other cotton types have been spun into these wonderful fabrics. (Please note that some “Egyptian Cottons” have only a small percentage of Egyptian cotton content). Giza is the finest of all the different types of Egyptian Cottons.

AVAILABLE COLORS:

Ivory
Sage
Taupe
White



(CRANIUM) SGLINEN COLLECTION

COTTON JACQUARDS

NICCOLO

330TC | 100% Giza Egyptian Cotton



Niccolo consists of a graphic splash pattern in Biscotti & Suede beige. Made in Italy.

Thread count is a minor part of the true value of fabric. Any kind of cotton can be woven to a high count. However, it is the kind of cotton used to make the threads that is the most important factor in every bed linen.

AVAILABLE COLORS:

Biscotti



(CRANIUM) SGLINEN COLLECTION

COTTON JACQUARDS

ORATIO

400TC (Pattern) / 300TC (Solid) | 100% Giza 70 Egyptian Cotton

The Oratio collection features a contemporary stripe, coordinating with the Helio collection.

This fabric is made in Italy, at a mill that has passed down through several generations. There is a substantial difference in the quality of Italian spinning, weaving, and finishing compared to Asian and Indian fabrics.

Our Italian fabrics will remain colorfast, beautiful, and sensuous to the touch far longer than others. The threads in these fabrics have been spun entirely from pure 100% Giza Egyptian Cotton. No other cotton types have been spun into these wonderful fabrics. (Please note that some “Egyptian Cottons” have only a small percentage of Egyptian cotton content). Giza is the finest of all the different types of Egyptian Cottons.

AVAILABLE COLORS:

Raffia (Light Taupe with Ivory pattern)



(CRANIUM) SGLINEN COLLECTION

COTTON JACQUARDS

PRELUDE

400 Thread Count / 500 Strand Count | 100% Giza Egyptian Cotton



The Prelude collection consists of a detailed Stripe design, and a subtle taupe plaid on spa blue, including a solid in Espresso.

This fabric is made in Italy, at a mill that has passed down through several generations. There is a substantial difference in the quality of Italian spinning, weaving, and finishing compared to Asian and Indian fabrics.

Our Italian fabrics will remain colorfast, beautiful, and sensuous to the touch far longer than others. The thread in these fabrics has been spun entirely from pure 100% Giza Egyptian Cotton. No other cotton types have been spun into these wonderful fabrics. (Please note that some “Egyptian Cottons” have only a small percentage of Egyptian cotton content). Giza is the finest of all the different types of Egyptian Cottons.

AVAILABLE COLORS:

Spa blue with Taupe pattern detailing and Espresso solid.



(CRANIUM) SGLINEN COLLECTION

COTTON JACQUARDS

PIETRO

46% Linen / 54% Giza 88 Egyptian Cotton



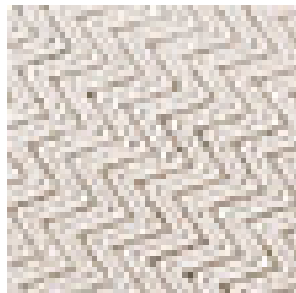
Pietro is a herringbone weave made of a linen/cotton blend. We have styled this pattern in a very simple way in order to increase its versatility. Pietro co-ordinates very well with a large range of design styles and tastes. It can be made to look minimalist and masculine, feminine and simple, cool and funky, elegant and subtle. Whatever your heart desires!

This fabric is made in Italy, at a mill that has passed down through several generations. There is a substantial difference in the quality of Italian spinning, weaving, and finishing compared to Asian and Indian fabrics. Our Italian fabrics will remain colorfast, beautiful, and sensuous to the touch far longer than others.

AVAILABLE COLORS:



Capri Suede



Pattern



(CRANIUM) SGLINEN COLLECTION

COTTON JACQUARDS

QUADRA ESPRESSO

350TC (Pattern) / 280TC (Stripe) | 100% Giza Egyptian Cotton



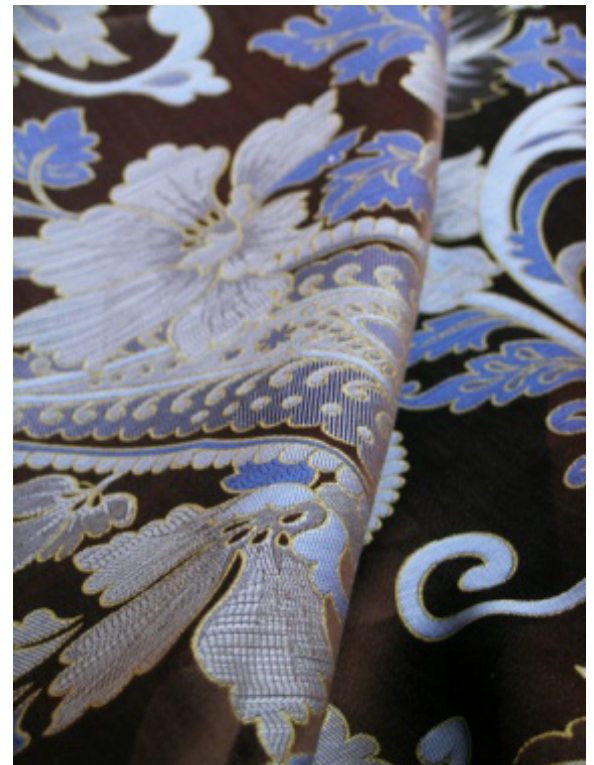
Quadra is an elegant floral pattern in Espresso brown & Grey blue or in Bracken & Seafoam green with matching stripe textile. Made in Italy.

Thread count is a minor part of the true value of fabric. Any kind of cotton can be woven to a high count. However, it is the kind of cotton used to make the threads that is the most important factor in every bed linen.

AVAILABLE COLORS:

Espresso

Bracken



(CRANIUM) SGLINEN COLLECTION

COTTON JACQUARDS

QUADRA BRACKEN

350TC (Pattern) / 280TC (Stripe) | 100% Giza Egyptian Cotton



Quadra is an elegant floral pattern in Espresso brown & Grey blue or in Bracken & Seafoam green with matching stripe textile. 350TC pattern; 280TC stripe; 100% Giza Egyptian Cotton; Made in Italy.

Thread count is a minor part of the true value of fabric. Any kind of cotton can be woven to a high count. However, it is the kind of cotton used to make the threads that is the most important factor in every bed linen.

AVAILABLE COLORS:

Espresso

Bracken



(CRANIUM) SGLINEN COLLECTION

COTTON JACQUARDS

RAPHAEL

300TC | 100% Giza Egyptian Cotton



The Raphael collection consists of a Floral Diamond Pattern, a small diamond pattern, and a Small Dot. The Duvet cover of this collection features unique tassels on the tow corners at the feet of the duvet. This cotton is completely machined washable and dryable. This fabric is made in Italy, at a mill that has passed down through several generations.

There is a substantial difference in the quality of Italian spinning, weaving, and finishing compared to Asian and Indian fabrics. Our Italian fabrics will remain colorfast, beautiful, and sensuous to the touch far longer than others. The thread in these fabrics has been spun entirely from pure 100% Giza Egyptian Cotton. No other cotton types have been spun into these wonderful fabrics. (Please note that some “Egyptian Cottons” have only a small percentage of Egyptian cotton content). Giza is the finest of all the different types of Egyptian Cottons.



AVAILABLE COLORS:

Copper
Dark Red



(CRANIUM) SGLINEN COLLECTION

COTTON JACQUARDS

ROSSINI

400TC | 100% Giza Egyptian Cotton



The Rossini collection consists of a detailed and elegant renaissance-style pattern of a Rusty Brown with Ivory and a woven textured pattern. This collection features a unique breakfast sham with a split in the middle showing the solid color between both patterns, with a tie in the middle. This fabric is made in Italy, at a mill that has passed down through several generations.

There is a substantial difference in the quality of Italian spinning, weaving, and finishing compared to Asian and Indian fabrics. Our Italian fabrics will remain colorfast, beautiful, and sensuous to the touch far longer than others.

The threads in these fabrics have been spun entirely from pure 100% Giza Egyptian Cotton. No other cotton types have been spun into these wonderful fabrics. (Please note that some "Egyptian Cottons" have only a small percentage of Egyptian cotton content). Giza is the finest of all the different types of Egyptian Cottons.

AVAILABLE COLORS:

Rusty Red with Ivory solid and detailing

(CRANIUM) SGLINEN COLLECTION

COTTON JACQUARDS

SERATA

300TC Jacquard | 100% Certified Organic Giza Egyptian Cotton



Serata is an organic cotton jacquard. The pattern features graceful floating ribbons that weave across the fabric. The coordinate is a small dot for flat and fitted sheets as well as pillowcases and cushions. The flat sheet and pillowcases are finished with a single row of satin stitch.

This bed linen can be mixed with Linea organic to give an individual look to your bed. No dyes or bleaches used in the process. PPIS is a National Standard for Organically grown plants and their products, instilled and monitored by the Ministry of Agriculture and Rural Development, in the State of Israel.

AVAILABLE COLORS:



Linea



Serata



(CRANIUM) SGLINEN COLLECTION

COTTON JACQUARDS

SORRENTO INDIGO

335TC (Pattern) / 300TC (Solid) | Giza 70 Egyptian Cotton



Sorrento is available in two colors: Indigo and Saffron. Sorrento Indigo combines a lightly variegated background that goes from deep jewel Indigo tone to a soft pastel grey-blue with a vine like floral silhouette in Ice Blue. This line is a modern take on the traditional oriental designs.

Details: Narrow double satin stitch in Graphite on flat sheet and pillowcases. Square shams combine a solid with detail in pattern reverse and a row of buttons.

Made In Italy.

Thread count is a minor part of the true value of fabric. Any kind of cotton can be woven to a high count. However, it is the kind of cotton used to make the threads that is the most important factor in every bed linen.

AVAILABLE COLORS:

Indigo
Saffron

(CRANIUM) SGLINEN COLLECTION

COTTON JACQUARDS

SORRENTO SAFFRON

300TC (Solid) / 335TC (Pattern) | Giza 70 Egyptian Cotton



Sorrento is available in two colors: Indigo and Saffron. Sorrento Saffron combines a lightly variegated background that goes from deeper Saffron tone to a soft pastel ochre with a vine like floral silhouette in Ice Blue. This line is a modern take on the traditional oriental designs. Details: Narrow double satin stitch in Graphite on flat sheet and pillowcases.

Square shams combine a solid with detail in pattern reverse and a row of buttons. Made In Italy. Thread count is a minor part of the true value of fabric. Any kind of cotton can be woven to a high count. However, it is the kind of cotton used to make the threads that is the most important factor in every bed linen.

AVAILABLE COLORS:

Indigo
Saffron



(CRANIUM) SGLINEN COLLECTION

COTTON JACQUARDS

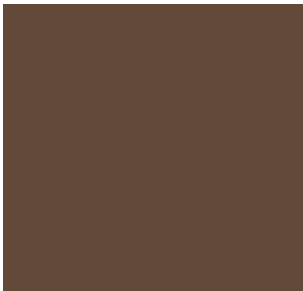
SURREY

325 Thread Count / 610 Strand Count | 100% Giza Egyptian Cotton

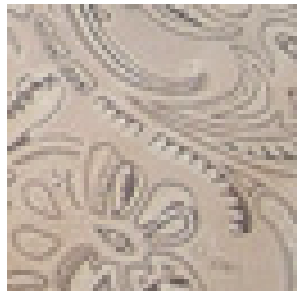


Surrey consists of traditional paisley pattern in Biscotti with Espresso solid. This fabric is made in Italy, at a mill that has passed down through several generations. There is a substantial difference in the quality of Italian spinning, weaving, and finishing compared to Asian and Indian fabrics. Our Italian fabrics will remain colorfast, beautiful, and sensuous to the touch far longer than others. The threads in these fabrics have been spun entirely from pure 100% Giza 70 Egyptian Cotton. No other cotton types have been spun into these wonderful fabrics. Giza is the finest of all the different types of Egyptian Cottons.

AVAILABLE COLORS:



Espresso



Pattern



(CRANIUM) SGLINEN COLLECTION

COTTON JACQUARDS

TERAMO

400 Thread Count / 500 Strand Count | 100% Giza Egyptian Cotton

The Teramo collection consists of a light overall leaf pattern, a dark overall leaf pattern, a diamond pattern, and a solid Capri Flax.

This fabric is made in Italy, at a mill that has passed down through several generations. There is a substantial difference in the quality of Italian spinning, weaving, and finishing compared to Asian and Indian fabrics. Our Italian fabrics will remain colorfast, beautiful, and sensuous to the touch far longer than others. The thread in these fabrics has been spun entirely from pure 100% Giza Egyptian Cotton.

No other cotton types have been spun into these wonderful fabrics. (Please note that some “Egyptian Cottons” have only a small percentage of Egyptian cotton content). Giza is the finest of all the different types of Egyptian Cottons.

AVAILABLE COLORS:

Copper with Flax



(CRANIUM) SGLINEN COLLECTION

COTTON JACQUARDS

TIVOLI

280 Thread Count / 480 Strand Count (Pattern)

300 Thread Count (Solid)

100% Giza Egyptian Cotton



This collection consists of a Pattern, and a Solid. This cotton is completely machine washable and dryable. This is a remarkable fabric made up of two threads, or strands, twisted together to make 2 ply threads of exceptional quality.

This special twisted double thread imparts greater strength and longevity to the fabric, while maintaining incredible softness. This fabric is made in Italy, at a mill that has passed down through several generations. There is a substantial difference in the quality of Italian spinning, weaving, and finishing compared to Asian and Indian fabrics.

Our Italian fabrics will remain colorfast, beautiful, and sensuous to the touch far longer than others. The thread in these fabrics has been spun entirely from pure 100% Giza Egyptian Cotton. No other cotton types have been spun into these wonderful fabrics. (Please note that some "Egyptian Cottons" have only a small percentage of Egyptian cotton content). Giza is the finest of all the different types of Egyptian Cottons.

AVAILABLE COLORS:

Gold
Ivory
White



(CRANIUM) SGLINEN COLLECTION

COTTON JACQUARDS

URBINO AQUA

350 Thread Count / 500 Strand Count | 100% Giza 70 Egyptian Cotton



Urbino is a modern interpretation of a traditional baroque design. It comes in Chestnut color and Aqua color. The Aqua color is a combination of light and dark tones in the aqua family. The Duvet cover, Euro and Grand shams have been finished with a border of solid Capri Aqua. The flat and fitted sheets as well as the pillowcases are shown here in Capri Suede. This pattern also co-ordinates well with Puccini and Xavier Suede. This fabric is made in Italy, at a mill that has passed down through several generations.

There is a substantial difference in the quality of Italian spinning, weaving, and finishing compared to Asian and Indian fabrics. Our Italian fabrics will remain colorfast, beautiful, and sensuous to the touch far longer than others. The threads in these fabrics have been spun entirely from pure 100% Giza Egyptian Cotton. No other cotton types have been spun into these wonderful fabrics. (Please note that some "Egyptian Cottons" have only a small percentage of Egyptian cotton content). Giza is the finest of all the different types of Egyptian Cottons.

AVAILABLE COLORS:



Capri Aqua



Main Pattern



Small Pattern



(CRANIUM) SGLINEN COLLECTION

COTTON JACQUARDS

URBINO CHESTNUT

350 Thread Count / 500 Strand Count | 100% Giza 70 Egyptian Cotton



Urbino is a modern interpretation of a traditional baroque design. It comes in Chestnut color and Aqua color. The Chestnut color is a combination of a rich dark chestnut background with a lighter suede pattern. The Duvet cover, Euro and Grand shams have been finished with a border of solid Chestnut. The flat sheet and pillowcases have a contrast satin stitch detail on the cuffs.

This fabric is made in Italy, at a mill that has passed down through several generations. There is a substantial difference in the quality of Italian spinning, weaving, and finishing compared to Asian and Indian fabrics.

Our Italian fabrics will remain colorfast, beautiful, and sensuous to the touch far longer than others. The threads in these fabrics have been spun entirely from pure 100% Giza Egyptian Cotton. No other cotton types have been spun into these wonderful fabrics. (Please note that some “Egyptian Cottons” have only a small percentage of Egyptian cotton content). Giza is the finest of all the different types of Egyptian Cotton.

AVAILABLE COLORS:



Capri Chestnut



Main Pattern



Small Pattern



(CRANIUM) SGLINEN COLLECTION

COTTON JACQUARDS

VARESE

400 Thread Count / 500 Strand Count | 100% Giza Egyptian Cotton



The Varese collection consists of an intricate Baroque floral design with solid accents. Available in Walnut & Capri Aqua or Paprika & Capri Aqua. This fabric is made in Italy, at a mill that has passed down through several generations. There is a substantial difference in the quality of Italian spinning, weaving, and finishing compared to Asian and Indian fabrics.

Our Italian fabrics will remain colorfast, beautiful, and sensuous to the touch far longer than others. The thread in these fabrics has been spun entirely from pure 100% Giza Egyptian Cotton. No other cotton types have been spun into these wonderful fabrics. (Please note that some "Egyptian Cottons" have only a small percentage of Egyptian cotton content). Giza is the finest of all the different types of Egyptian Cottons.

AVAILABLE COLORS:

Walnut & Capri Aqua

Paprika & Capri Aqua



(CRANIUM) SGLINEN COLLECTION

COTTON JACQUARDS

ZUCOTTO CHESTNUT

350 Thread Count / 500 Strand Count | 100% Giza Egyptian Cotton

Zucotto Chestnut is a one color jacquard with a very complex weave. The jacquard consists of flowers on a linen look background that ensures the pattern stands out at any angle.

A contrasting fabric in mauve is used as trim to finish off the shams. Shell buttons add an elegant look to one of the toss cushions. Solid Chestnut with Zucotto trim is used for the flat sheet and the fitted sheet is solid Mauve.



(CRANIUM) SGLINEN COLLECTION

COTTON JACQUARDS

ZUCOTTO TEAL

350 Thread Count / 500 Strand Count | 100% Giza Egyptian Cotton

Zucotto Teal is a one color jacquard with a very complex weave. The jacquard consists of flowers on a linen look background that ensures the pattern stands out at any angle.

A contrasting fabric in glacier is used as trim to finish off the shams. Shell buttons add a shimmer to one of the toss cushions. Solid Glacier sateen is used for both of the sheets.

